

## Commitment to Excellence

*The story of BBJ started around the mid-1930s. The ever increasing traffic movement between the twin cities of Calcutta & Howrah demanded a wider and stronger bridge in place of the existing pontoon bridge. The option was a cantilever bridge across the river Hooghly.*

*The job called for great expertise. The engineering giants - Braithwaite, Burn & Jessop came together with their vast experiences and floated a new company. Thus on 26th January 1935 was born BBJ, The Braithwaite Burn & Jessop Construction Company Limited.*

*The ever increasing traffic movement between the twin cities of Calcutta & Howrah demanded a wider and stronger bridge in place of the existing pontoon bridge. The option was a cantilever bridge across the river Hooghly.*

*The job called for great expertise. The engineering giants - Braithwaite, Burn & Jessop came together with their vast experiences and floated a new company.*



## The Braithwaite Burn and Jessop Construction Company Limited

(A Government of India Enterprise)



### The Braithwaite Burn and Jessop Construction Company Limited

27, R. N. Mukherjee Road, Kolkata -700001

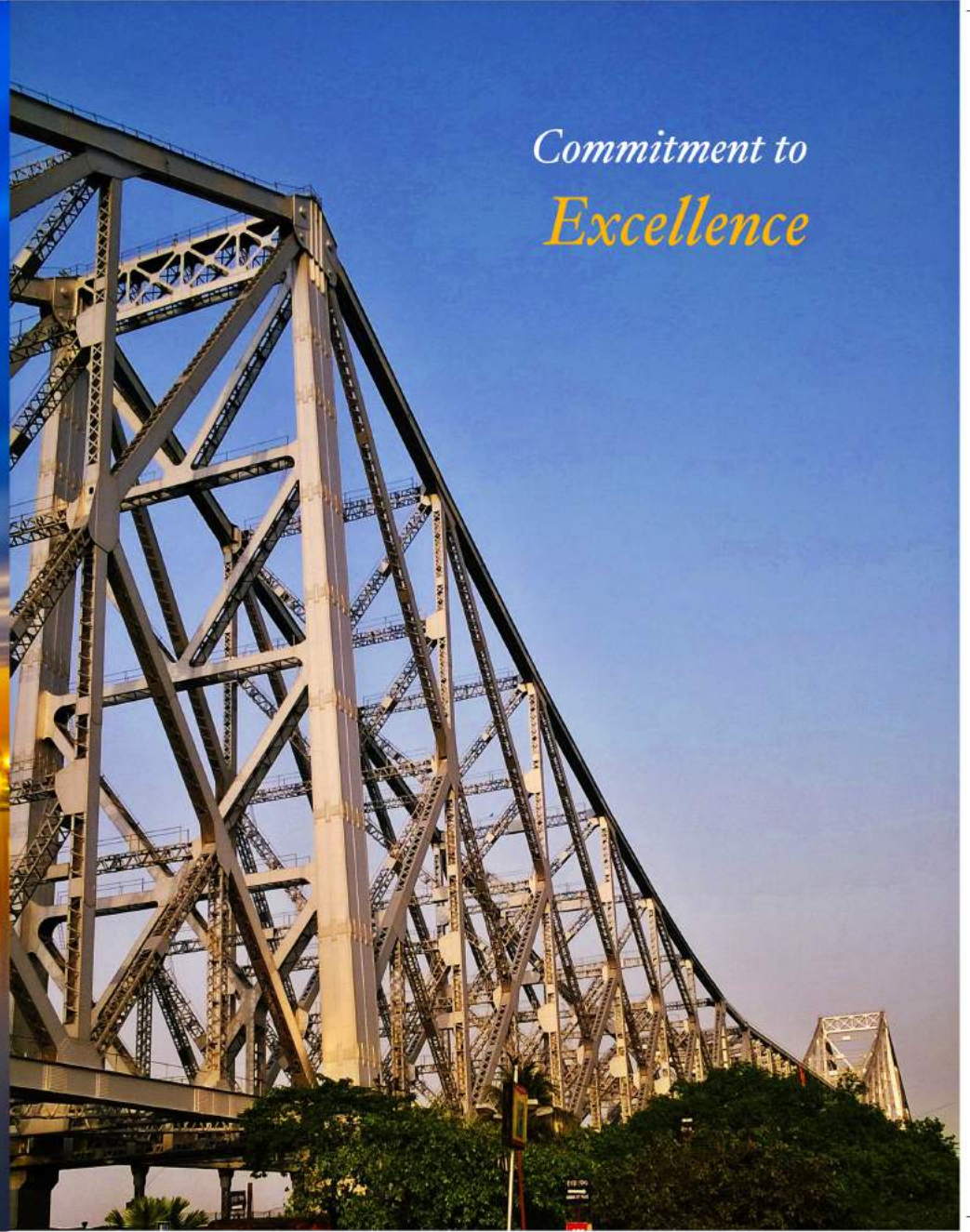
Phone: +91 33 22485841-44

Fax: +91 33 22103961

email: [info@bbjconst.com](mailto:info@bbjconst.com)

Website: [www.bbjconst.com](http://www.bbjconst.com)

*A Premier Construction Company*



*Commitment to  
Excellence*

## CSR INITIATIVES

Activities under CSR to be undertaken by BBJ in the field of Health & Education during this financial year:

BBJ has been undertaking CSR activities as per the Companies Act 2013 and guideline issued by DPE. CSR activities are generally in the field of Health and Education.

During the current year Rs. 124.78 lakhs has been contributed to the "Swachh Bharat Kosh" for providing toilets in the schools. This is in line with the Clarion Call given by the Hon'ble Prime Minister.

This year contribution is being made to few educational institutions for upgrading their equipment to provide better care.

Board level committee headed by an Independent Director has been formed to guide & monitor the implementation of CSR & Sustainability activities. Report on the progress & implementation of the activities is provided from time to time to the Board of Directors of the Company.

The Company is conscious of its obligation and responsibilities towards the society and will take all necessary action to discharge its responsibilities.

Activities under CSR taken by BBJ in the Financial Year 2015 - 2016, amounting Rs. 135.03 Lakhs.

Contribution of Rs. 124.78 lakhs to "Swachh Bharat Kosh" for construction of "Toilets at Schools" stating in the forwarding letter that "payment being made is for toilets in schools".

Different learning and lab equipments provided to Raghudevati Sadharanar Vidyalaya at Howrah district of West Bengal. Items provided to the school amounting Rs. 5.59 lakhs.

Different hostel Utensils (for kitchen) and furniture's, learning and lab equipments for the school provided to Calcutta Blind School at D.H.Road, Kolkata - 700034. Items provided to the school



**The Braithwaite Burn and Jessop Construction Company Limited**  
(A Government of India Enterprise)

The early story of BBJ started around the mid-thirties. The ever increasing traffic movement between the twin cities of Calcutta (now Kolkata) & Howrah demanded a wider and stronger bridge in replacement of the then existing pontoon bridge. The authorities accordingly decided on building a cantilever bridge across the river Hooghly. The job undoubtedly called for greater expertise. So the three engineering giants - Braithwaite, Burn & Jessop - came together with their vast experiences and floated a new company. Thus on 26th January 1935 was born BBJ, The Braithwaite Burn & Jessop Construction Company Limited.

The onward march began in 1941 with the marvel that is Howrah Bridge or Rabindra Setu. Its recent achievement is the second Hooghly Bridge or Vidyasagar Setu. In between BBJ has, in its record, a number of engineering landmarks spread across the India.

BBJ incorporated under the Co's Act, 1956, became a subsidiary of Bharat Bhari Udyog Nigam Limited (BBUNL) during September, 1987 through transfer of its entire shareholding in the name of the President of India, through BBUNL. By order of the Govt. of India, The Braithwaite Burn and Jessop Construction Company Limited (A Govt. of India Undertaking) stands amalgamated with Bharat Bhari Udyog Nigam Limited (A Govt. of India Enterprise) w.e.f. 10th July, 2015. The Ministry of Corporate Affairs, Govt. of India by certificate dated 18th November, 2015 issued by the office of the Registrar of Companies, Kolkata, West Bengal, has changed the name of the company Bharat Bhari Udyog Nigam Limited to "The Braithwaite Burn and Jessop Construction Company Limited" with effect from 18th November, 2015 pursuant to rule 29 of the Company Incorporation rule - 2014.

BBJ's growth was synonymous with the overall growth of independent India. BBJ's towering achievements are amply evident in India's major Rail Bridges linking East with West and North with South.

The Ganga Bridge at Mokameh, Godavari Bridge at Rajamundry, Krishna Bridge at Vijawada, Brahmaputra Bridge at Joghghopa and Ganga Bridge at Munger are some of the very well known achievements of this company.

BBJ's engineering might and prowess is also evident in installation of major steel plants, thermal power stations, oil refineries, fertilizer projects. BBJ has also undertaken restoration of damaged bridges, creation of fabricated industrial structures and civil construction of major commercial and administrative buildings.

From a tiny acorn, BBJ has grown into a giant oak with an annual turnover of INR. 88.44 Crores during the year 2017-2018, serving both Private and Public Sectors, Indian and Overseas.

Utilizing the most modern construction equipment and technology, with high degree of expertise and substantial in-house resources, employing above 100 people in its permanent cadre, while at any time engaging more than 1,500 locally employed staff and workers at various project sites.



The iconic Howrah Bridge (Balanced Cantilever Bridge)

The Howrah Bridge / Rabindra Setu is a Balanced Cantilever Bridge with a suspended span over the Hooghly River in West Bengal, India.

It is a unique bridge - one of its kind in the world at that time. The bridge was official classified as "Suspension Type Balanced Cantilever". When it was commissioned it was the third longest cantilever bridge. The bridge does not have any nuts and bolts. It is of riveted construction. The bridge deck hangs from 39 pairs of hangers suspended from the main trusses.

Date of starting :- 1935,

Open to traffic :- 1943,

Type :- Balanced Cantilever Road Bridge,

Salient features :- Total Length 823m, Steel Work- 26000 mt. (appx) with Monolith Piers having a central span of 1500 ft. appx. with truss height of 300 ft.



## AWARDS & CERTIFICATES

"Utkrista Rajbhasha Shree" Shield Samman

UDYOG RATTAN AWARD & EXCELLENCE AWARD from INSTITUTE OF ECONOMIC STUDIES (IES)



SKOCH AWARD - 2014

Turnaround CPSE awarded by BRPSE on 2010

Excellent Aesthetics Matching with Environment - National Award from Indian Institute of Bridge Engineers



BBJ has been awarded Certificate for its Quality Management System (ISO 9001:2015) for Fabrication & Site Erection of Steel Bridges.





## The Braithwaite Burn and Jessop Construction Company Limited

(A Government of India Enterprise)

### We can offer:

Long Span Steel Bridge Design, Manufacture & Construction for:

- Cable Stayed Bridge
- Truss Girder
- Plate Girder
- Steel Concrete Composite Girder

Civil Design, Survey Work & Construction for:

- Pile Foundation
- Composite Bridge
- Multi Storied Building
- Marine Structures
- Bridges

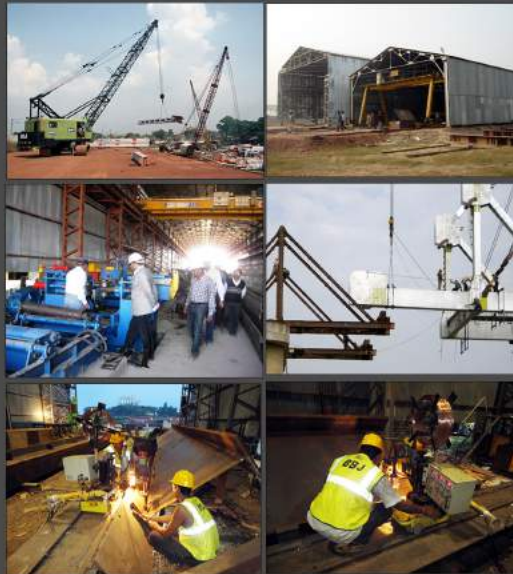
Any Challenging work in Civil Engineering



*The Vidyasagar Setu or Second Hooghly Bridge*

### BBJ - INFRASTRUCTURE

Utilizing the most modern construction equipment and technology, with high degree of expertise and substantial in-house resources, employing above 100 people in its permanent cadre, while at any time engaging more than 1,500 locally employed staff and workers at various project sites.



*Vidyasagar Setu is the longest cable-stayed bridge in India and one of the longest in Asia with a total length of 823 metres (2,700 ft). Construction began on 3 July 1979, and the bridge was commissioned on 10 October 1992 by the Hooghly River Bridge Commission.*

*Technology of Cable Stayed Bridge was introduced 1st time in India. The design was changed several times by the consulting firm. The work was carried out under strict supervision of SBP (German Consultant Firm & Designer of the bridge) with height level of quality control.*

Open to traffic :- 1992  
 Total Length: 822.96 metres (2,700 ft)  
 Width: 35 metres (115 ft)  
 Longest Span: 457.2 metres (1,500 ft)  
 Construction Started: 3 July 1979  
 Opened to Traffic: 10th October 1992  
 Daily Traffic: 85,000 vehicles  
 Salient features: Side Spans- 182.88m each, Pylon- 122m high, 152 cables, Cable Weight- 1400 mt.  
 Steel Work- 13200 mt. (appx), Supply, Fabrication & erection.

## A string of bridges across India



### GODAVARI BRIDGE

The Godavari Bridge is a truss bridge over the river Godavari at Rajahmundry, Andhra Pradesh state of India. Godavari Bridge is also known as Kovvur Rajahmundry Bridge is the Asia's second longest road-cum-rail bridge above the water.

Date of starting: 1970,  
Open to traffic: 1974  
Type: Rail cum Road Bridge (laid in 6 degree curve)  
Length: 2.7 km  
Span: 27x90m+6x45m  
Steel Work: 16300 mt.

### GANGA BRIDGE - MOKAMA

The Rajendra Setu is the first rail-cum-road bridge over the holy river Ganga to connect both the parts of Bihar. Rajendra Setu is also known as Mokama Bridge is located near Mokama in the capital of Bihar, Patna. The nearly 2.0 kilometres long bridge carries a double line railway track along with two lane road.

Type: Double Deck Rail-cum-Road Bridge, Erection only  
Length: 1.8 Km  
Span: 14x120m+4x30m  
Steel Work: 12500 mt. (approx.)



### NARNARAYANA SETU - BRAHMAPUTRA

The Naranarayana Bridge is a rail-cum-road bridge over the mighty Brahmaputra river at Assam state of India. Naranarayan Setu is 2.5 kilometres long truss bridge and connect two city Pancharatna and Goalpara of Assam.

Date of starting: 1989  
Open to traffic: 1999  
Type: Rail cum Road Bridge (Carriageway- 4 Lanes)  
Length: 2.3 km  
Span: 7x125m+1x94.6m+2x32.6m  
Steel Work: 29200 mt. (appx)



## STEEL PLANTS POWER STATIONS & INDUSTRIAL BUILDINGS

The expansion of the firm's activities from steel Bridges and industrial steel structures was an inevitable corollary, the take-off commencing in 1936 with the fabrication, supply and erection of structural steelwork. Subsequently, BBJ took its rightful place amongst the largest companies in the country and executed various steel structures of Alloy Steel Plant, Durgapur; Steel plants at Jamshedpur, Bhilai, Rourkela; Thermal Power Generating stations at Cossipore, Bandel, Mulajore, Chandrapura and Harduaganj; Fertiliser plant at Sindri, Heavy Engg. Corporation, Ranchi; Heavy Electricals at Bhopal; AVB-Durgapur and Refineries at Namrup and Barauni and many others.

### Refinery Piping

BBJ has executed so many Refinery Piping projects like Bongaigaon Refinery and many more. BBJ has also the credit of constructing 47 miles long 58" dia, pipeline of Rangoon Corporation, Burma (Presently Yangon and Myanmar respectively).

### Industrial Structurals

BBJ has supplied steel structurals for Steel Plants and large Industrial Projects like Burnpur Steel Plant at West Bengal, Fertilizer Project at Haldia, West Bengal, Heavy Engineering Corporation at Raipur, Plymouth Power Project at New Zealand and many more..

BBJ supplied complete steel structurals for a Power Plant in New Zealand

### CIVIL WORKS AT PORT & DOCS

BBJ has always been associated with all the major ports and docks of India, viz. Calcutta, (presently Kolkata), Bombay (presently Mumbai), Cochin, Paradip and Haldia in the field of Civil Construction work



## CIVIL CONSTRUCTION

CONSTRUCTION OF W.B. GOVT BUILDING (West Bengal)  
Benfish Administrative Building at Salt Lake, West Bengal  
ALLAHABAD BANK BUILDING, KOLKATA (West Bengal)



FARMERS' CONVENTION CENTRE (FCC), SABOUR, BIHAR  
GUEST HOUSE, SABOUR, BIHAR  
FARMERS' CONVENTION CENTRE (FCC), PUSA, BIHAR  
FARMERS' HOSTEL, SABOUR, BIHAR



### KRISHNA BRIDGE - VIJAYWADA

Date of starting: 1984, Open to traffic: 1985,  
Type: Rail Bridge, Erection only  
Salient features: Length- 1.1 KM, Span- 12x90m,  
Steel Work- 3600 MT (appx.)  
Challenges during construction: 3600 mt. of steel  
work was erected in record time in spite of very  
constricted working place.



### MAHANADI BRIDGE, CUTTACK, ORISSA

Fabrication and Erection of 32 Nos 64.6 M spans  
over river Mahanadi in connection with Doubling of  
Talcher-Cuttack-Paradip section of Odissa.

Date of starting :- 2005, Open to traffic :- 2008  
Type :- Rail Bridge,  
Salient features:- Span-32x64.6m,  
Total Length- 2.1km,  
Steel Work- 8500 mt. (appx)

### GANDAK BRIDGE - SONEPUR, BIHAR

Fabrication and Erection of new rail bridge across  
river Gandak between Hajipur and Sonepur.

Date of starting: 2009  
Total value: Rs. 45.62 cr. (appx)  
Type: Rail Bridge  
Supply Fabrication & Erection  
Salient features:  
Length: 720m,  
Span: 8 x 76.2m + 6 x 18.3m,  
Steel Work: 3000 MT.



### GANGADHAR BRIDGE, DHUBRI (ASSAM)

Fabrication and Erection of spans steel girder  
across Gangadhar river in connection with  
construction of new BG line from New  
Maynaguri, West Bengal to Jogighopa, Assam.

Date of starting: 2007, Open to traffic: 2010  
Type: Rail Bridge  
Salient features: Length- 594 m.  
Span- 13 x 45.7m,  
Steel Work- 1500 MT (appx.)



## GANGA BRIDGE, MUNGER

### HIGHLIGHTS:

# Considering truss configuration, huge self weight and multiple spans over perennial river flow segmental construction preferred and adopted.

# Bridge components fabricated at site workshops.

# Specially designed welding machine was used for submerged arc welding (SAW).

# Monthly production rate maintained at 2000 MT.



### SALIENT FEATURES

Total Length	: 3690M
Total Width	: 12.250 M
Steelwork	: 61000MT
RCC Deck	: 18000 Cu.m.
Rail Load	: IRS MBG, 25T-2008
Road Load	: IRC 70R, Class A
Road carriages	: 4 Lanes with footpath



### Marine Work & associated Ancillary Work:

- Dredging at Frazergunj - WB
- Shankarpur Fishing Harbour - WB
- Kakdwip Fishing Harbour - WB



### Deck Concreting & associated Road Work

- Ganga Mubger Bridge - Bihar
- Saraighat Bridge - Assam



### Road Bridge:

- R.O.B Road work at Chaibasa (Jharkhand)
- RCC Bridge, PWD (R&B), Dharmanagar, Tripura
- RCC Bridge, Kalaichandi, Paschim Medinipur





## CIVIL CONSTRUCTION

### Building Work (EPC Projects)

BERHAMPUR TOURIST COMPLEX (West Bengal)  
KAKDWIP TOURIST COMPLEX (West Bengal)  
SHANKARPUR TOURIST COMPLEX (West Bengal)



Sultanpur Market Complex and Food Park (West Bengal)  
Marketing Hub at Kharagpur, West Bengal  
Kakdwip Market Complex (West Bengal)



Kendrya Vidyalaya, Burla, Sambalpur, Odissa  
INTERSTATE TRUCK TERMINUS (ISTT), JIRANIA, AGARTALA, TRIPURA



## GANGA BRIDGE, MUNGER

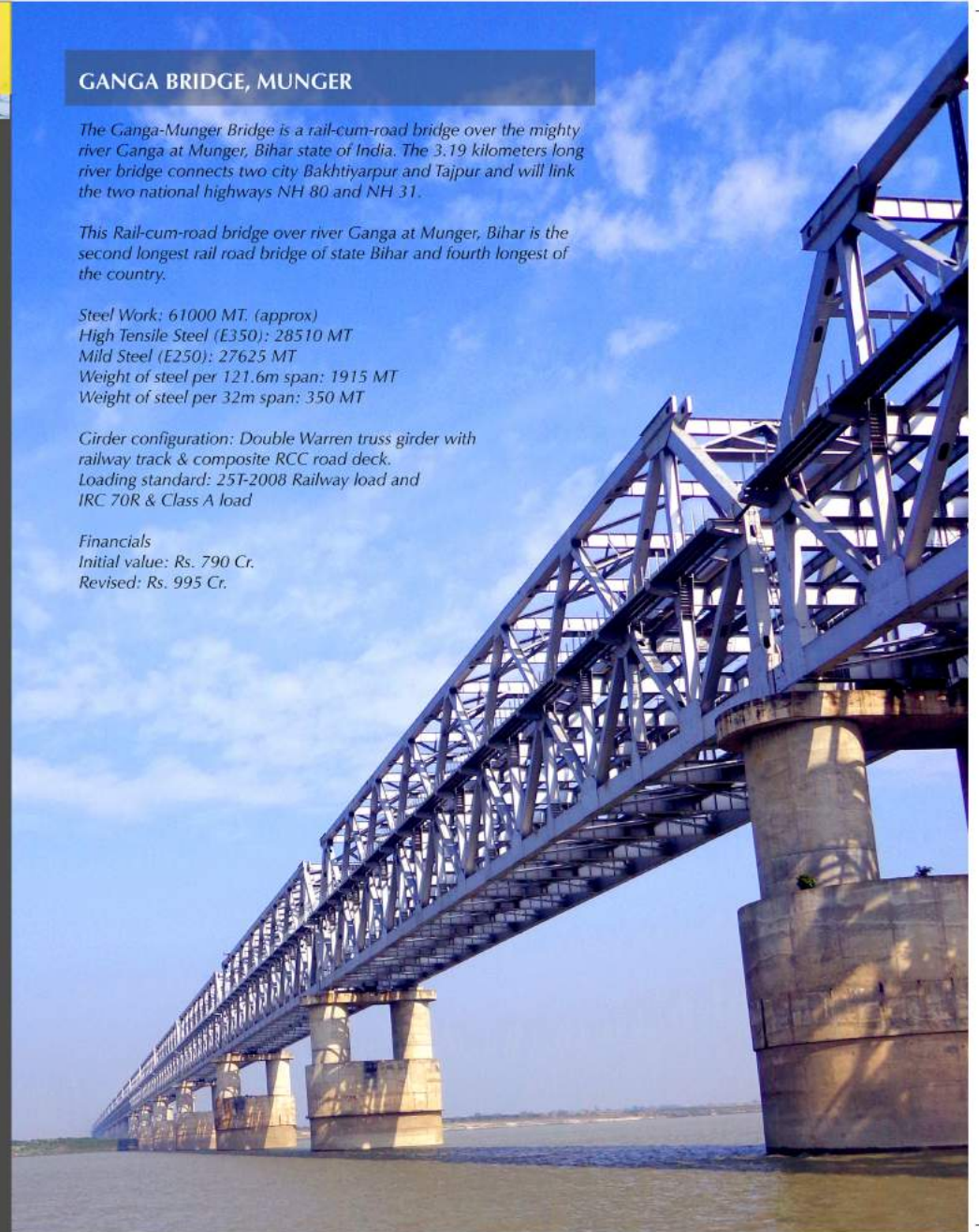
The Ganga-Munger Bridge is a rail-cum-road bridge over the mighty river Ganga at Munger, Bihar state of India. The 3.19 kilometers long river bridge connects two city Bakhtiyarpur and Tajpur and will link the two national highways NH 80 and NH 31.

This Rail-cum-road bridge over river Ganga at Munger, Bihar is the second longest rail road bridge of state Bihar and fourth longest of the country.

Steel Work: 61000 MT. (approx)  
High Tensile Steel (E350): 28510 MT  
Mild Steel (E250): 27625 MT  
Weight of steel per 121.6m span: 1915 MT  
Weight of steel per 32m span: 350 MT

Girder configuration: Double Warren truss girder with railway track & composite RCC road deck.  
Loading standard: 25T-2008 Railway load and IRC 70R & Class A load

Financials  
Initial value: Rs. 790 Cr.  
Revised: Rs. 995 Cr.



## REPAIRING / RESTORATION OF BRIDGES AND RAILWAY GAUGE CONVERSION



### REPAIRING / RESTORATION OF BRIDGES

1. Vivekananda Setu, Kolkata
2. Howrah Bridge, Kolkata
3. Bridges in Bangladesh
4. Khidirpur Bridge, Kolkata
5. Rihand Bridge
6. Ullhas Bridge

### RAILWAY GAUGE CONVERSION

1. **HASIMARA - MADARIHAT:** on Torsa river between Hasimara and Madarihat Station under N. F. Railway.
2. **NEW JALPAIGURI - NEW BONGAIGAON:** MG Section under N. F. Railway, Maligaon.
3. **SRIRAMNAGAR - GADWAL:** Mahabubnagar - between Sriramnagar and Gadwal station under South Central Railway, Secunderabad.
5. **LUMDING - TINSUKIA:** under N. F. Railway, Maligaon under N. F. Railway.
7. **GUWAHATI - LUMDING:** under N. F. Railway.
8. **RAIDAK II RIVER:** Bridge No. 316 on Raidak-II river under N. F. Railway.
9. **RAIDAK I RIVER:** Bridge no. 292 on Raidak I river under N. F. Railway.
10. **SANKOSH RIVER:** Bridge no. 329 on Sankosh river in between Jorai and Sri Rampur, Assam station - N. F. Railway.
11. **LUMDING - DIBRUGARH:** LUMDING - Bridge No. 184 - Between Lumding, Dibrugarh, Tinsukia to LKPE stations under N. F. Railway.



### METRO RAIL PROJECTS

BBJ has undertaken construction of different metro railway projects in Kolkata, Delhi and Mumbai.

#### Kolkata Metro:

Sub structure work for overhead Metro line between Naktala and Garia and Foundation work for Naktala Metro Station (Tollygunge - New Garia Section for Kolkata Metro extension.

#### Delhi Metro:

Metro Rail Bridge over Northern Railway tracks, Kirtinagar (Delhi)  
Delhi Metro Rail Bridge, Rajagarden (Delhi)

#### Mumbai Metro:

Metro Rail Bridge over Western Railway Tracks (Mumbai)



SUB STRUCTURE WORK - KOLKATA METRO

### METRO RAIL BRIDGES



DELHI METRO BRIDGE - RAJA GARDEN, NEW DELHI



DELHI METRO BRIDGE - RAILWAY TRACK AT KIRTINAGAR, NEW DELHI



MUMBAI METRO BRIDGE - RAILWAY TRACK AT ANDHERI, MUMBAI