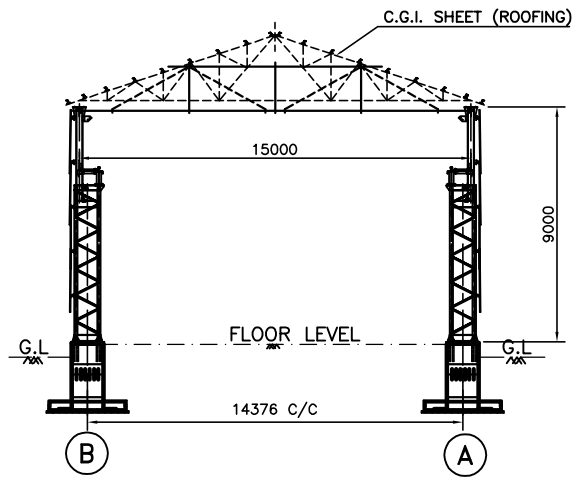
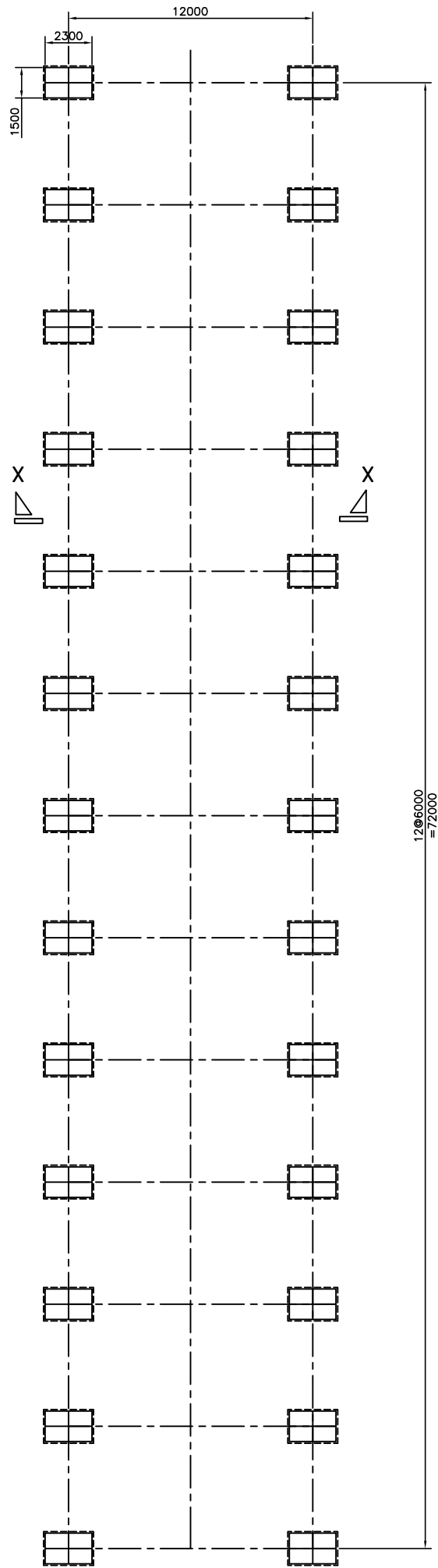


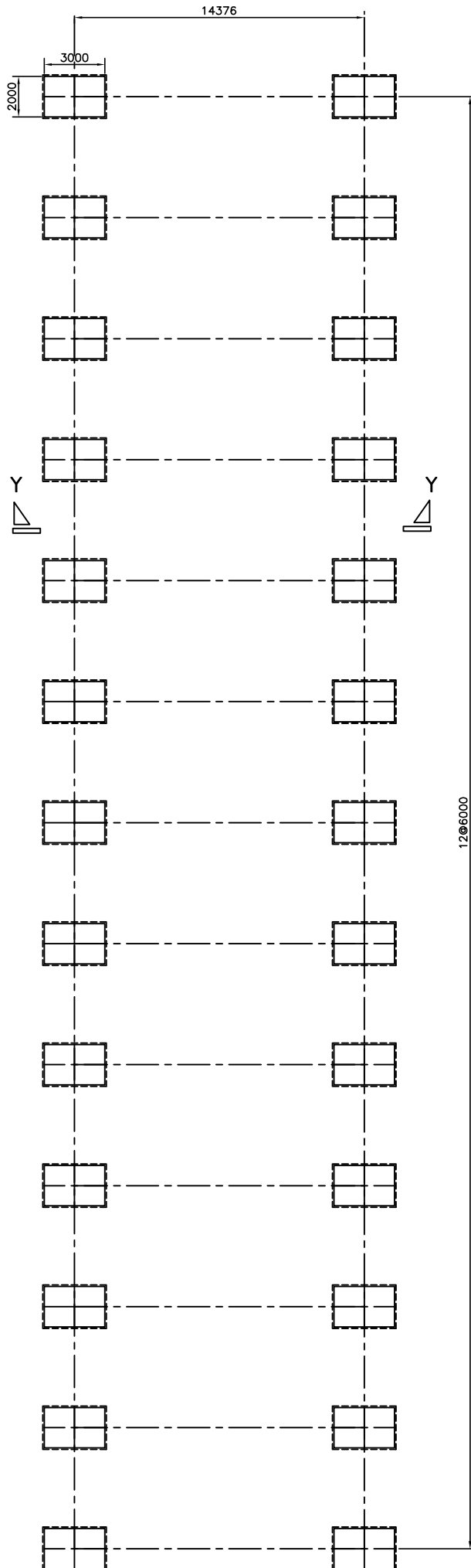
SECTION X-X




SECTION Y-Y



12 M x 72 M - 2 NOS



15 M x 72 M - 1 NO

 THE BRAITHWAITE BURN & JESSOP CONSTRUCTION CO. LTD. KOLKATA (A GOVT. OF INDIA INDIA ENTERPRISE)			
PROJECT: PROPOSED RAIL BRIDGE ACROSS RIVER GANGA AT ALLHABAD OF 24x76.2 M. SPAN GIRDER DOUBLE LINE			
TITLE: FOUNDATION LAYOUT DETAIL OF WORKSHOP (12x72 M) & (15x72M)			
DRAWN BY:	R.BOSE	10.11.20	ORDER NO.: 3135
CHECKED BY:			SCALE: 1:50
APPROVED BY:			
DRG. NO.-	3135-ERC-SITE-SK-15		REV. NO. 0